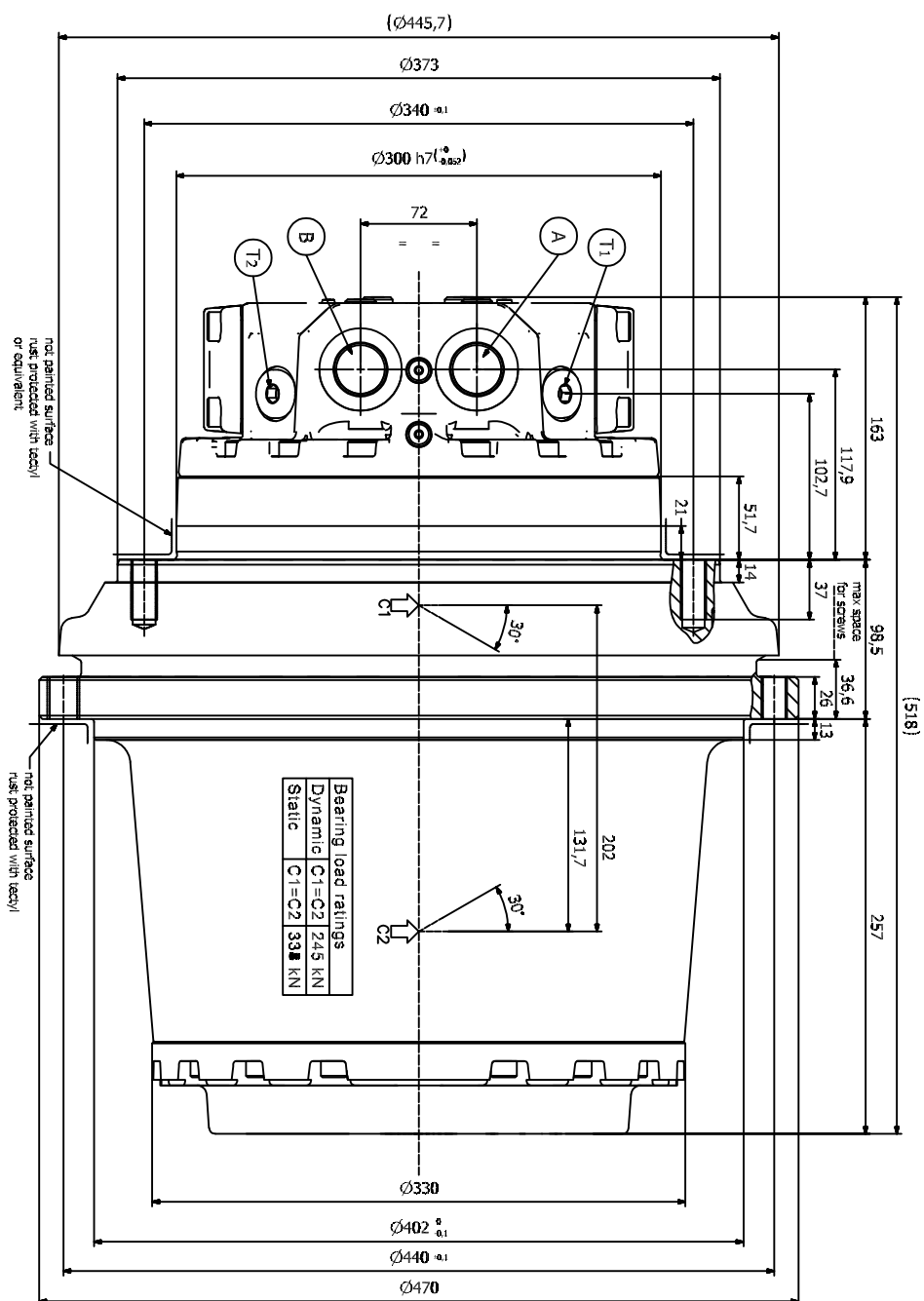
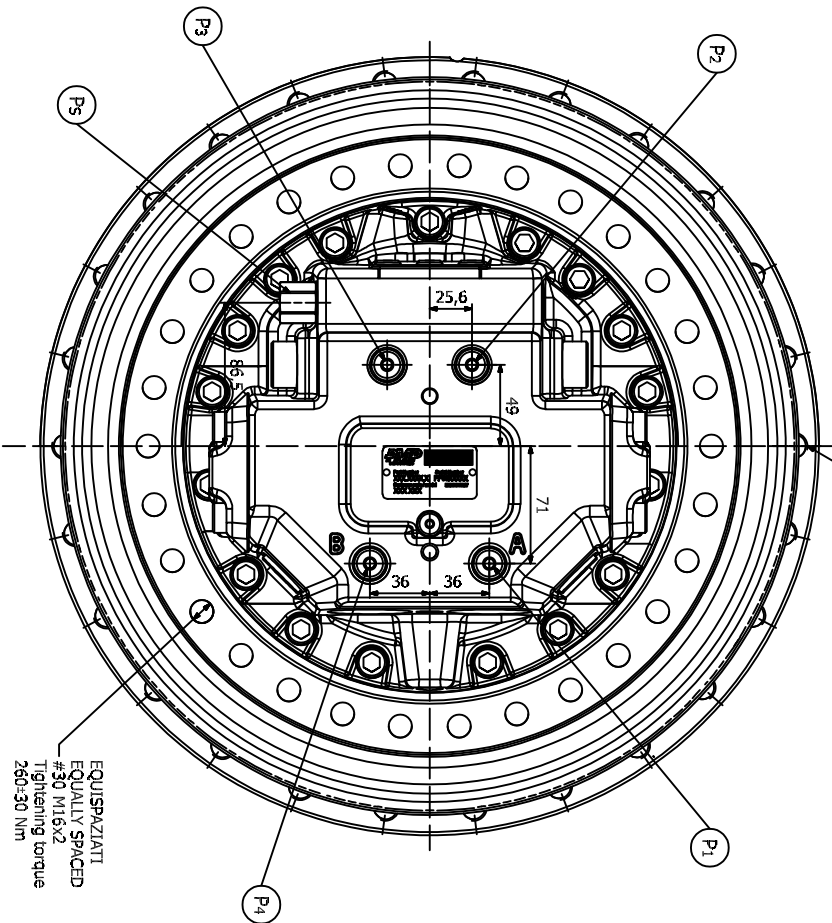
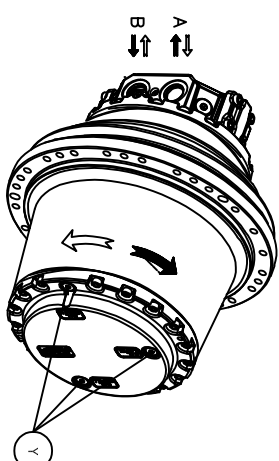


**EQUIPAZIATI
EQUALLY SPACED
#26 M16x2**



Bearing load ratings	
Dynamic	C1=C2 245 kN
Static	C1=C2 333 kN



DESCRIZIONE PORTE/PORT DESCRIPTION	
A; B	Alimentz. motore / Motor port
T1 ; T2	Drenaggi / Drain port *
P1 ; P4	Porte manometri / Pressure gauge port
P2 ; P3	Porte manometri / Pressure gauge port
P5	cambio velocità / two speed control port **
Y	tappi olio anteriori /front oil plugs
	M1&L1.5

* Collegare il drenaggio alla porta più alta / Connect drain hose to upper port

** usare lo stesso olio del circuito idraulico del motore / use the same oil of the hydraulic motor circuit

oil of the hydraulic motor circuit

usare lo stesso olio del circu

[illegible]

upper port

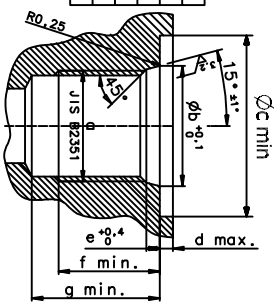
* Collegare il drenaggio alla po

[illegible]

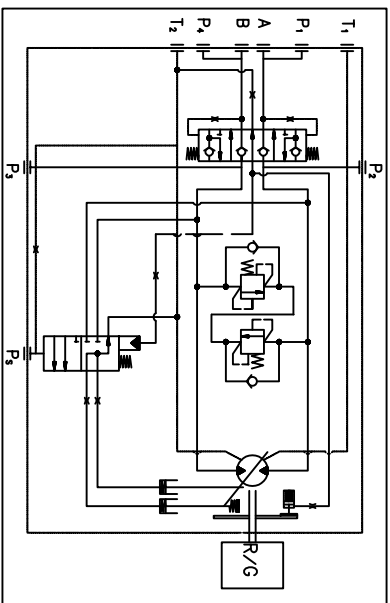
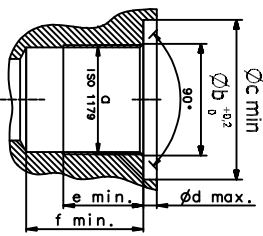
Y
Tappi olio anteriori /Fr

PS	cambio velocità / two :
----	-------------------------

a	b	c	d	e	f	g
G1*	33.8	51	2.5	3.5	2.5	30
G1/2*	22.6	34	2.5	2.5	19	24
G3/8*	18.6	28	2.0	2.5	15	18
G1/4*	15.6	24	1.5	2.5	15	18



PORTE ISO 1179 / ISO 1179 PORTS					
a	b	c	d	e	f
G 1/2"	21	30	2.5	15	18
G1/4"	13.2	21	1.5	12	15



TRAVEL MOTOR SPECIFICATIONS :

TECHNICAL DATA	
DISPLACEMENT (MAX-MIN)	137.9-80.7 CC/REV
MAX. PRESSURE	34.3 BAR
MAX. FLOW RATE	242 LPM
DRAIN PRESSURE (continuous-peak)	2-5 BAR
MAX. THEORETICAL PRESSURE (MAX-MIN DISPLACEMENT)	753-441 Nm
COUNTER BALANCE VALVE OPENING PRESSURE (START-COMPLETE)	6-13 BAR
2 SPEED CONTROL PRESSURE (MIN-MAX)	20-70 BAR
DUAL SPEED AUTOMATIC SHIFT PRESSURE (40 /32 BAR PILOT PR.)	300-230 BAR

BRAKE TECHNICAL DATA :

<p> BRAKE TORQUE AT MOTOR SHAFT BRAKE RELEASE PRESSURE FOR COMPLETE DISENGAGEMENT </p>	<p> 650±10% Nm 12.5 BAR </p>
--	---

GEAR BOX SPECIFICATIONS :

Technical Data	
Theoretical Maximum Torque	47.4-27.8 KNm
Theoretical Maximum Output Speed	27.9-47.8 RPM
Braking Torque at Sprocket	40950 Nm (+/-10%)
Reduction Ratio	63
Gearbox Oil	SAE80W90 APIGL5
Motor Gearbox Weight	245 Kg
Gearbox Oil Quantity	3.4 Ltrs

NOTE:

1. THIS TRAVEL DRIVE IS PROPRIETARY ITEM PURCHASED FROM M/s PMP

MACHINING DEVIATIONS FOR LINEAR DIMENSIONS								THE REST
APPROXIMATE UP TO AND INCLUDING VALUE	6	30	120	315	1000	2000	4000	
—	6	30	120	315	1000	2000	4000	—
±0.1	±0.2	±0.3	±0.5	±0.8	±1.2	±2	±3	

[illegible]