

BEML SRM Software and IE Settings Setup Instructions

- 1) Click on 'Download SRM Setup' link available on the left side of the page (<https://www.bemlindia.in/eprocurement/demo.php>) and download the zipped file to your system.
- 2) Extract the zipped files to folder BEML_SRM_Software_Setup which shows the following folder and file :
 - a) install-files (File Folder)
 - b) setup.bat (Windows Batch File)
- 3) Right click on the setup.bat file and click on 'Run as administrator'.
- 4) In case Windows Defender displays message as below, click on More info.

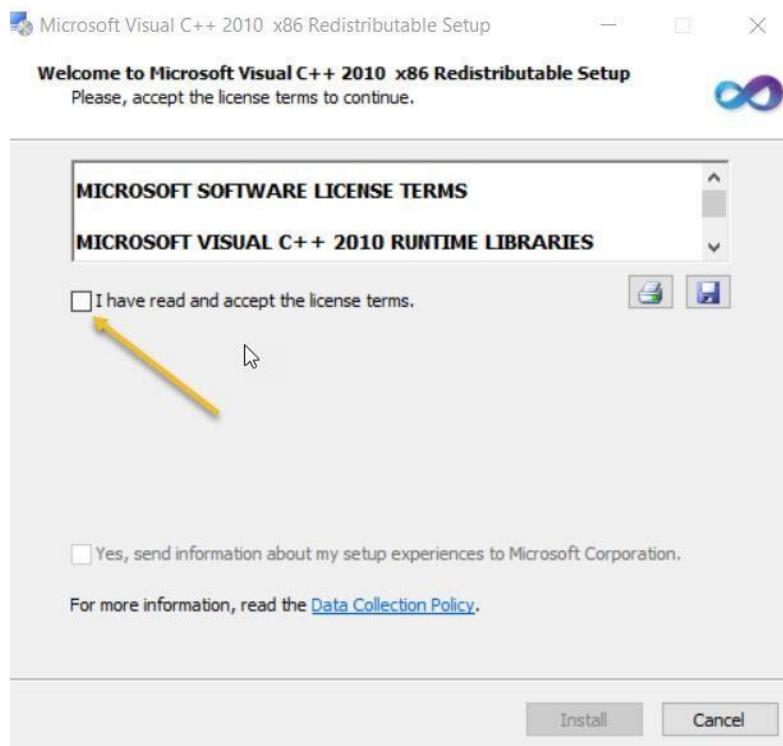


:2:

- 5) Click on 'Run anyway' as shown below.



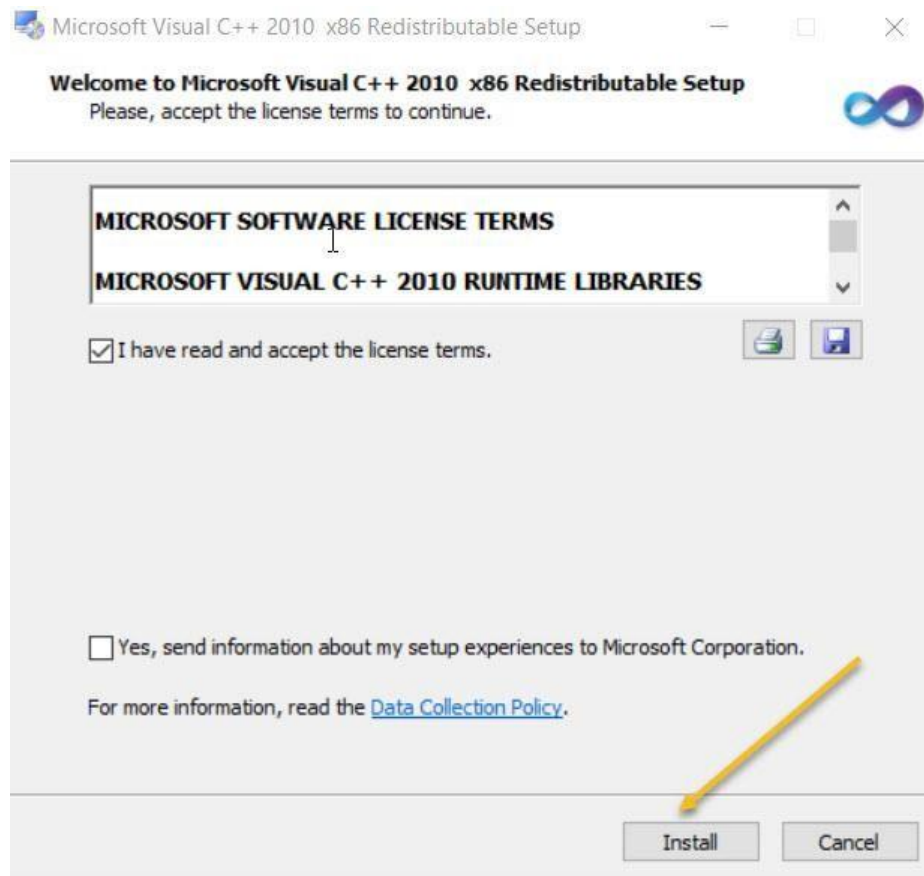
- 6) Microsoft Visual C++ 2010 32 bit installation will start. Put tick mark for I have read and accept the license terms as shown below. (In case this software is already installed in the system, please refer to page 9).



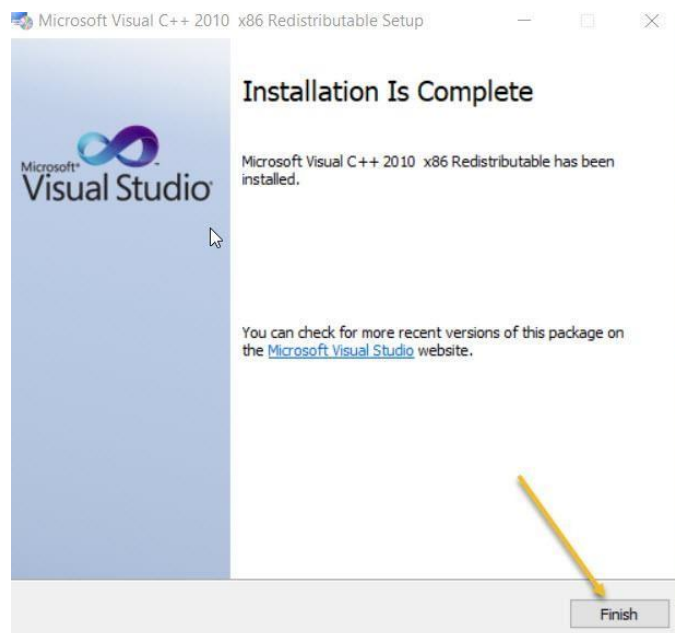
..3..

:3:

7) Click on Install button as shown below.



8) Click Finish as shown below.



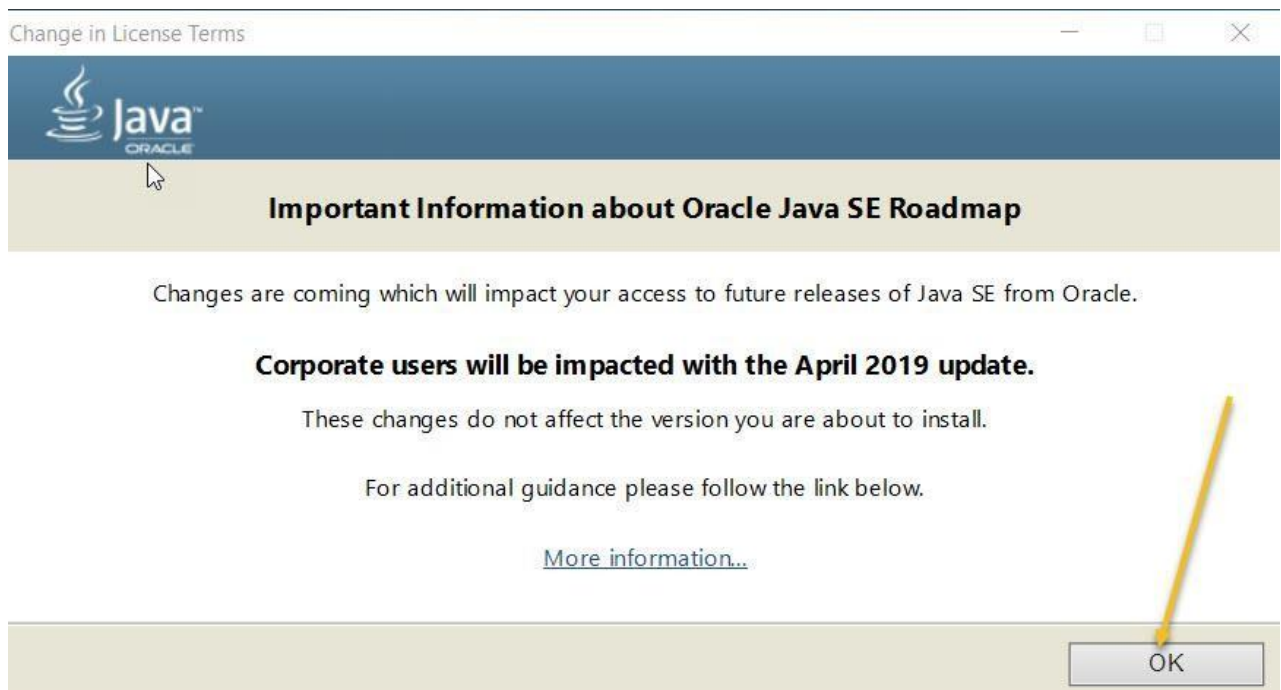
..3..

:4:

9) Java 8 Update 201 32 bit installation will start. Click on Install as shown below.



10) Click on OK as shown below.



..5..

:5:

- 11) In case the following screen is displayed, uncheck for 'Restore Java security prompts' and click on Next as shown below.

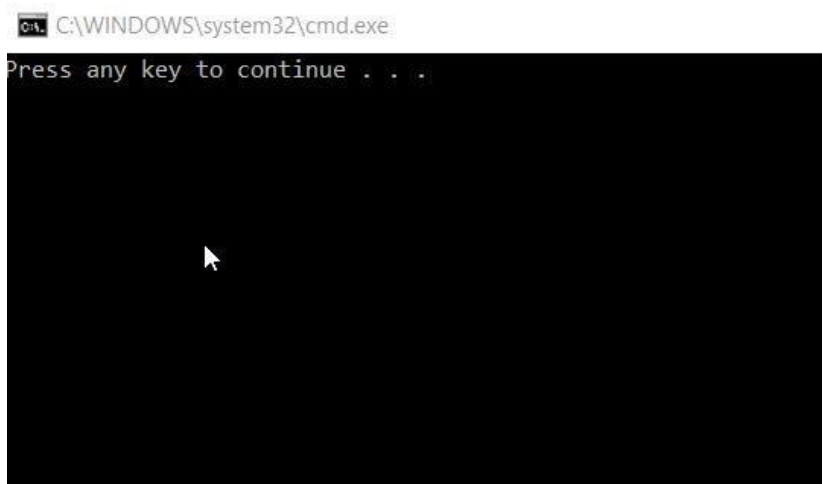


- 12) Click on Close as shown below.



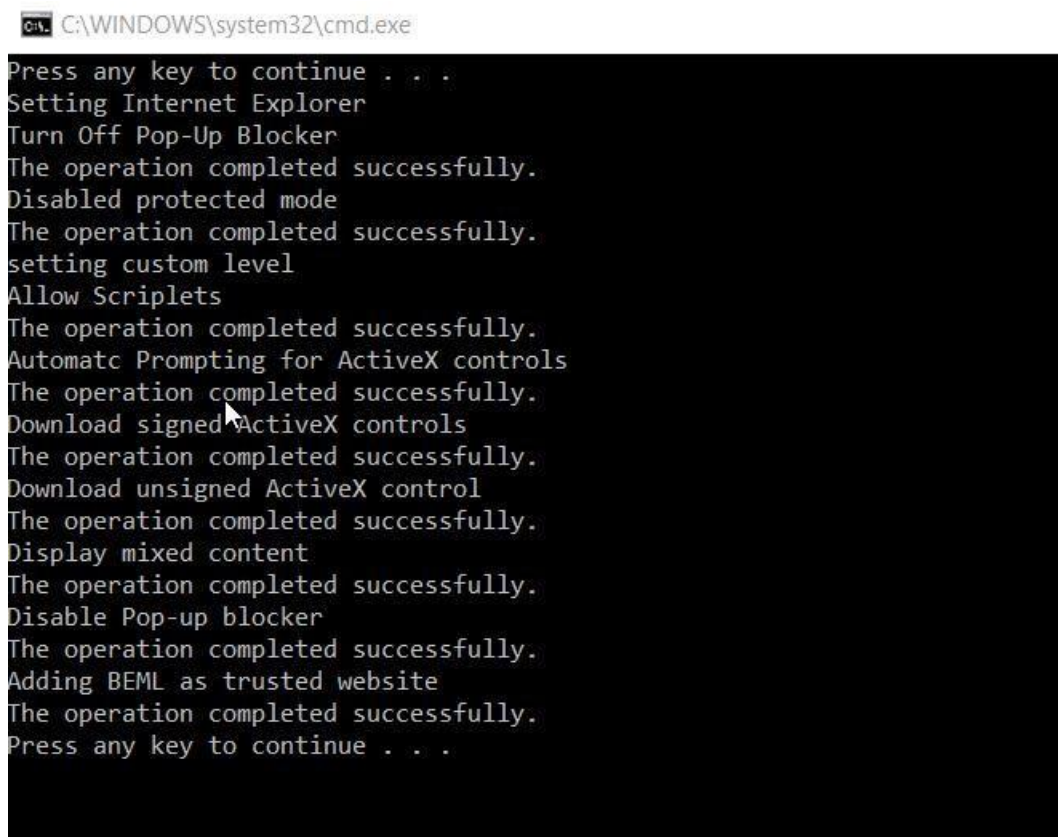
:6:

- 13) Message as shown below is displayed. Press any key on the keyboard to continue and close the installation.



- 14) Click on 'Download IE Setup' (link available on the left side of the page <https://www.bemlindia.in/eprocurement/demo.php>) and download the batch file to your system. Right click on the file downloaded and click on 'Run as administrator'. Press any key on the keyboard to continue.

Trusted Site entry (https://*.bemlindia.in) is added in Internet Explorer and the required settings for Trusted Sites Zone are made. Screen as shown below is displayed.

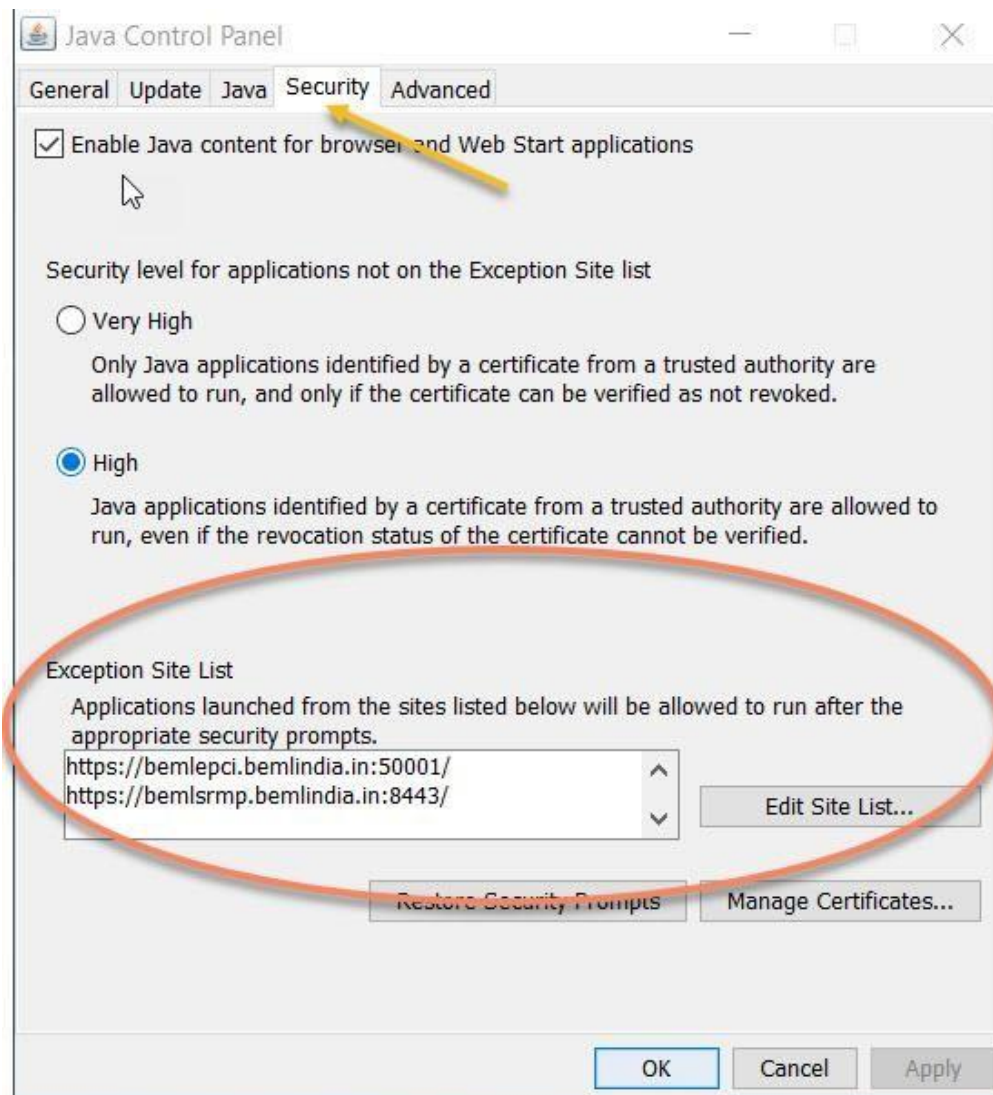


:8:

15) Pressing any key will close the screen.

16) Open Java Control Panel. Click on Security tab and click on Edit Site List..., Click on Add and add the following two entries:

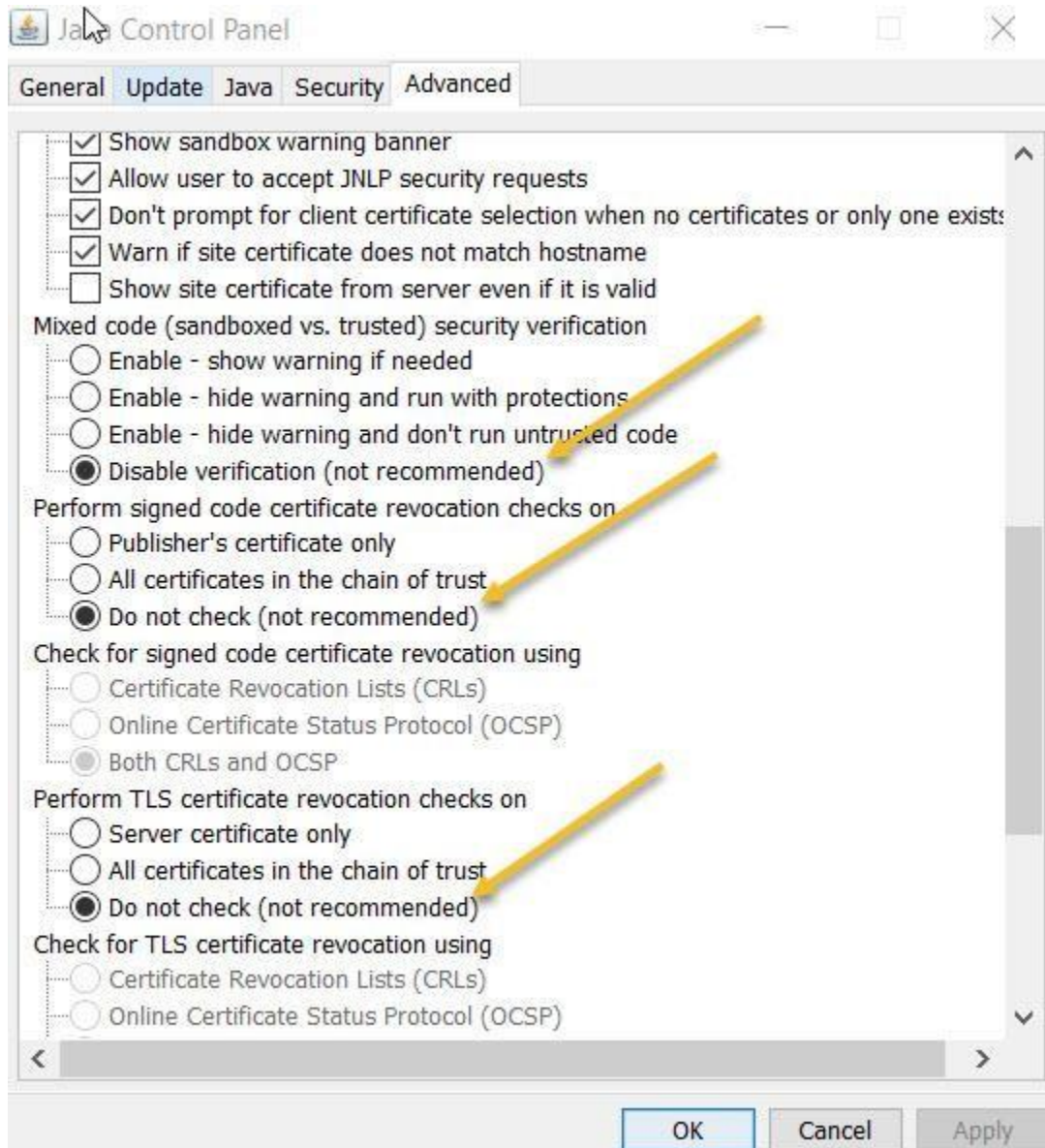
- i) <https://bemlepci.bemlindia.in:50001/>
- ii) <https://bemlsrmp.bemlindia.in:8443/>



17) Click on OK.

:8:

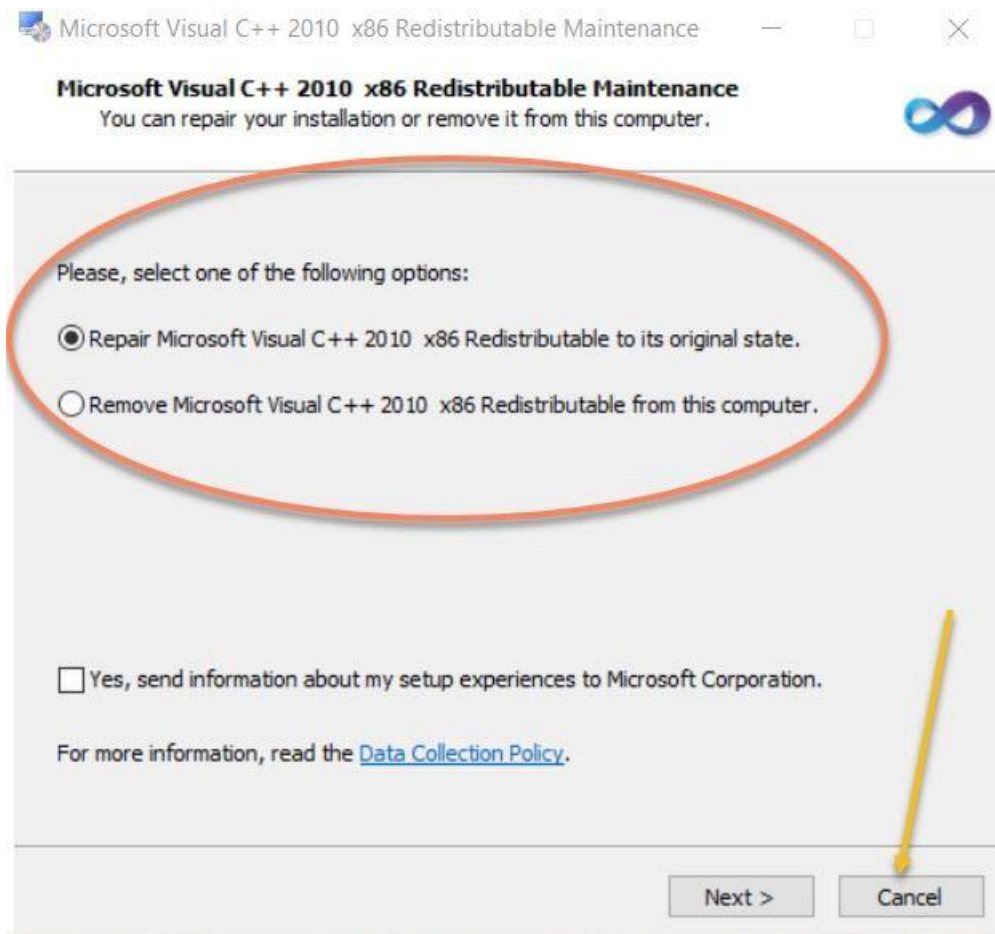
18) Click on the Advanced tab and select the three parameters as shown below.



19) Click on OK.

:9:

20) If Microsoft Visual C++ 2010 32 bit is already installed in the system, you will get message as shown below.



21) Click on Cancel and click on Yes for 'Are you sure you want to cancel?'.
